



# The **LEF** Range

Low Energy Floodlights

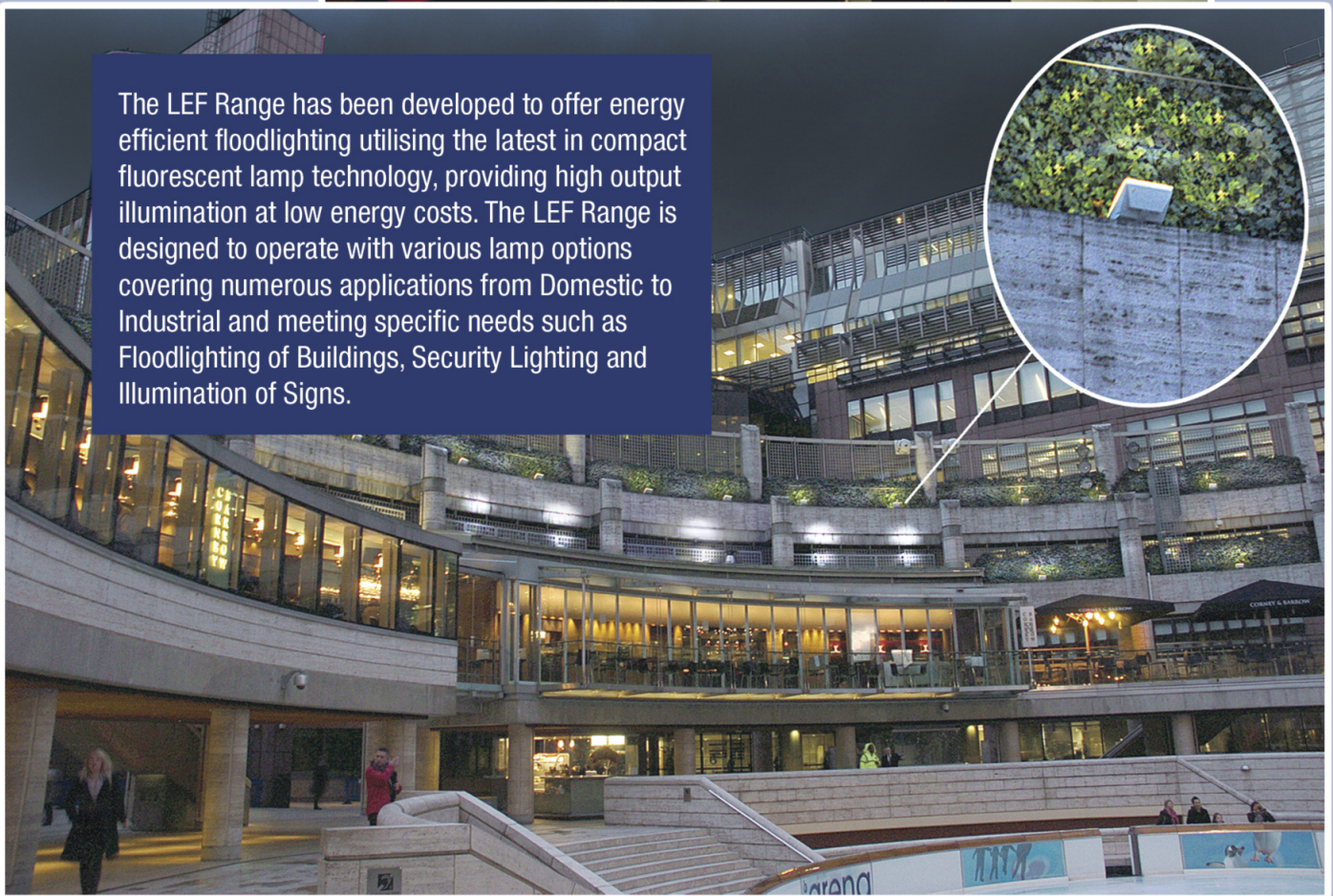
**Floodlighting**  
**Security Lighting**  
**Sign Lighting**







The LEF Range has been developed to offer energy efficient floodlighting utilising the latest in compact fluorescent lamp technology, providing high output illumination at low energy costs. The LEF Range is designed to operate with various lamp options covering numerous applications from Domestic to Industrial and meeting specific needs such as Floodlighting of Buildings, Security Lighting and Illumination of Signs.







Constructed from high grade polycarbonate, the LEF Range is fitted with faceted reflectors to enhance light output and significantly reduce energy consumption when compared with discharge lighting. The result of this is energy efficient floodlighting, security lighting or sign lighting at a cost of as little as 2 pence\* for 10 hours of illumination. The LEF can be controlled by a timer or an optional in-built dusk to dawn photocell, eliminating, in most applications, the need for passive infra red sensors.

## Features

- Multi-faceted Reflectors enhancing light output
- Energy efficient with models providing running costs starting at 2 pence\* for 10 hours of illumination
- Reduction in consumption of up to 92%
- Compatible with controls such as timers, dusk to dawn photocells and occupancy detectors
- Constructed in polycarbonate and as such rustproof
- Available with Black or White bodies
- IP rated against water ingress
- Suitable for mounting to Projection Arm
- Complies with the requirements of BS4533/EN 60598

## Compare the running costs\*

The table below demonstrates comparative running costs of standard 300w and 500w halogens against single 26w – twin 26w – single 42w LEF Floodlights, for an average period of 10 hours per night, during a 12 month period (3650 hours). \*Based on 8p KwHr.

	500W	300W	LEF126 (single 26W)	LEF226 (twin 26W)	LEF142 (single 42W)	LEF242 (twin 42W)
Cost of electricity consumed	£146.00	£87.60	£7.60	£15.20	£12.26	£24.52
Lamp costs over total hours run	£12.66	£10.44	£1.00	£2.00	£1.63	£2.26
<b>Total running cost per annum</b>	<b>£158.66</b>	<b>£98.04</b>	<b>£8.60</b>	<b>£17.20</b>	<b>£13.89</b>	<b>£26.78</b>

## Battery Power

The LEF Range can be supplied with a portable rechargeable battery pack to allow usage where mains power is not available. This is ideal for use in road works, emergency repair works and general site work. When fully charged the battery will run one single 42w fitting for up to 10 hours of full operation and will fully recharge in approximately 5 hours.

## LEF 126 Mini



**Power:** 1x26 Watt

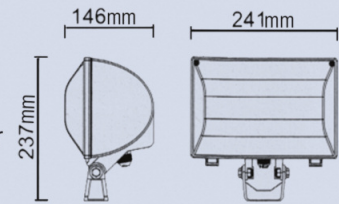
**Volt:** 220-240v+,50Hz

**Weight incl. lamps:** 0.86Kg

**Housing:** Polycarbonate body with clear PC diffuser

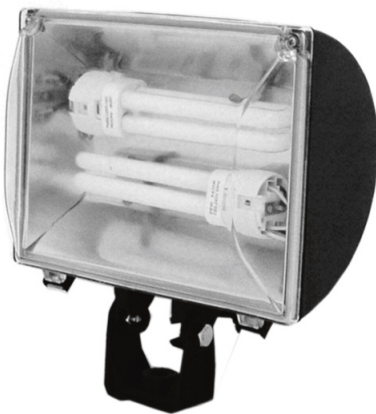
**Colour:** Black or white

**Dimensions:** H237mm x W241mm x D146mm



**Applications:** Access Passages & Driveways / Sign illumination / Patio lighting / Domestic security / External cash dispenser / Door entry systems / Exit door support light.

## LEF 226 Mini



**Power:** 2x26 Watt

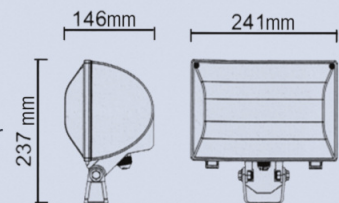
**Volt:** 220-240v+,50Hz

**Weight incl. lamps:** 1.2Kg

**Housing:** Polycarbonate body with clear PC diffuser

**Colour:** Black or white

**Dimensions:** H237mm x W241mm x D146mm



**Applications:** Patio lighting / Car parking / Display lighting / Commercial Security lighting / Feature lighting / Internal uplighting / "Decorative" illumination of buildings / Exit door support lights / Sign lighting / Commercial & Industrial storage & loading bays.

## LEF 126



**Power:** 1x26 Watt

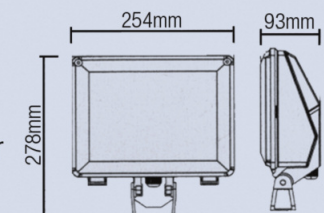
**Volt:** 220-240v+,50Hz

**Weight incl. lamps:** 1.15kg

**Housing:** Polycarbonate body with clear PC diffuser

**Colour:** Black or white

**Dimensions:** H278mm x W254mm x D93mm



**Applications:** Access Passages & Driveways / Sign illumination / Patio lighting / Domestic & Commercial security lighting / "Decorative" illumination of buildings / Internal uplighting / Feature lighting / Exit door support lighting.





## LEF 142

**Power:** 1x42 Watt

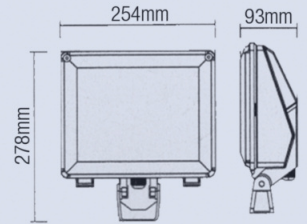
**Volt:** 220-240v+, 50Hz

**Weight incl. lamps:** 1.15Kg

**Housing:** Polycarbonate body with clear PC diffuser

**Colour:** Black or White

**Dimensions:** H278mm x W254mm x D93mm



**Applications:** Access Passages & Driveways / Sign illumination / Patio lighting / Domestic security / External cash dispenser / Door entry systems / Exit door support light.



## LEF 324

**Power:** 3x24 Watt

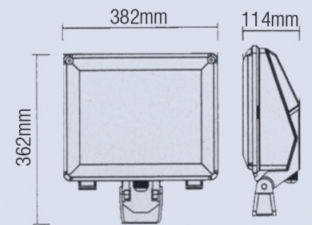
**Volt:** 220-240v+, 50Hz

**Weight incl. lamps:** 1.85Kg

**Housing:** Polycarbonate body with clear PC diffuser

**Colour:** Black or white

**Dimensions:** H362mm x W382mm x D114mm



**Applications:** Access Passages & Driveways / Sign illumination / Patio lighting / Domestic security / External cash dispenser / Door entry systems / Exit door support light.



## LEF 242

**Power:** 2x42 Watt

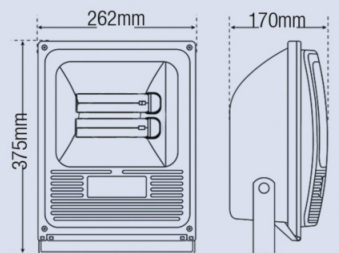
**Volt:** 220-240v+, 50Hz

**Weight incl. Bracket & lamps:** 2.56Kg

**Housing:** Polycarbonate body with clear PC diffuser

**Colour:** Black

**Dimensions:** H375mm x W262mm x D170mm



**Applications:** Factory lighting / Car parks / Playgrounds / Commercial & Industrial storage and loading bays.

\*All LEF floodlights are available with integral Dusk to Dawn Photocells and Projection arms. LEF242 available with U shape adjustable mounting bracket.



**Dusk to Dawn Photocell**



**Projection arm**

**Length:** 500mm  
**Construction:** Steel painted black  
**Weight:** 0.63Kg



Morgan Hope Industries Ltd, Units 5 and 6, Blowick Industrial Park,  
Crowland Street, Southport, Merseyside PR9 7RU, England

Tel: 01704 512000

Fax: 01704 542632

E-mail: [info@morganhope.com](mailto:info@morganhope.com)

Website: [www.morganhope.com](http://www.morganhope.com)