

INSTALLATION INSTRUCTIONS

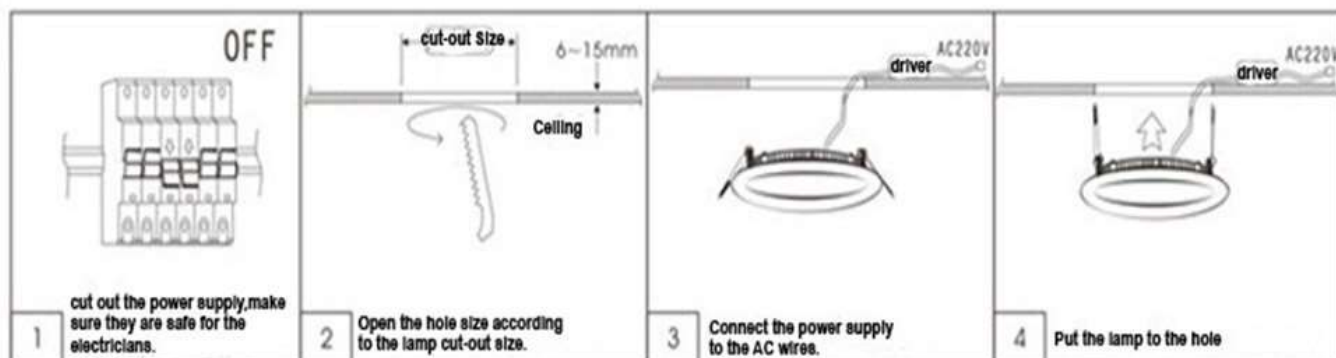


SAPPHIRE LEDLITE LP

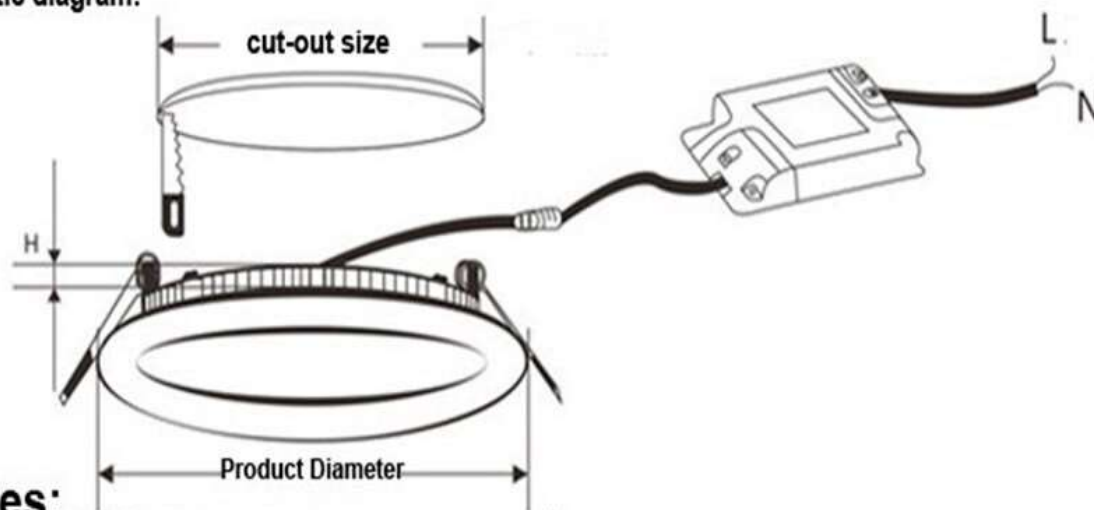


Installation:

1. First, cut out the power supply, make sure they are safe for the electricians.
2. Open the hole size according to the lamp cut-out size.
3. Connect the power supply to the AC wires.
4. Put the lamp to the hole.



Schematic diagram:



Notes:

- .Please using the specified drivers(voltage and electric current).
- .Suitable for dimmer switch.
- .When install and replace the lamps,must cut out the power supply,to make sure safe.
- .Do not use outdoor or any occasion can be Rain.

MODEL CODE	WATTAGE	LAMP LUMEN OUTPUT	COLOUR TEMPERATURE	OVERALL SIZE	CUT-OUT SIZE
SAPPHIRE LEDLITE LP	11W	1155 lm	3000 - 6000k	ø 140 mm x 25 mm (H)	ø 125 mm
	18W	1890 lm		ø 180 mm x 27 mm (H)	ø 160 mm
	23W	2415 lm		ø 230 mm x 28 mm (H)	ø 210 mm



morganhope
INDUSTRIES LTD



Telephone: +44 (0)1704 512000
Email: info@morganhope.com www.morganhope.com