

**INSTALLATION INSTRUCTIONS**



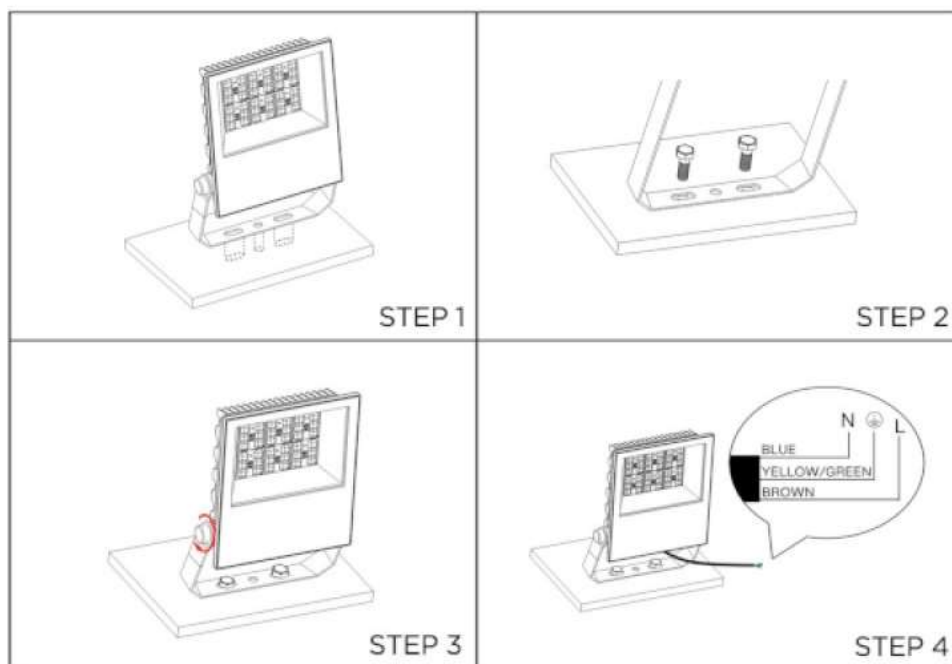
**ASTRID HIGHLITE HP**



### **Important Safety**

1. Before installation or maintenance, ensure that the mains supply to the luminaire is switched off and circuit supply fuses are removed or the circuit breaker is turned off.
2. It is recommended that only a qualified electrical contractor carries out the installation of this luminaire and that the luminaire is installed in compliance with the current edition of the IEE wiring Regulations.
3. The person carrying out the installation is to check and verify that the total load on the circuit, including that of this luminaire does not exceed the rating of the circuit cable, fuse or circuit breaker.
4. Where applicable, careful consideration should be taken during installation to ensure that all fixings and/or suspensions are of a suitable size for the luminaire being installed.

### **Instructions:**



1. Drill holes on the installation surface as per bracket dimension diagram.
2. Position and fix the luminaire using appropriate fixings for the chosen surface.
3. Adjust luminaire to suitable angle, tighten screw and secure the luminaire.
4. Connect power cable correctly as per wiring diagram and make waterproof measures well to maintain the same IP rating of the luminaire.





Telephone: +44 (0)1704 512000  
Email: [info@morganhope.com](mailto:info@morganhope.com) [www.morganhope.com](http://www.morganhope.com)