

# ASTRID SSL-PROSTAR-1-MS

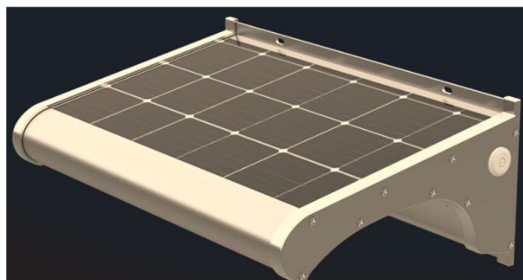
LED Solar Powered Amenity Light with Movement Sensor

## APPLICATIONS

- Shop Fronts
- Wall Wash
- Outdoor Signage
- Under Canopy Lighting
- No power areas

## FEATURES

- 5W
- 100lm/w
- Movement Sensor
- Different Mounting options
- 3000K/4000K/6000K
- Airplane Grade Aluminium body
- IP65 Rated



## Description

The Astrid SSL-PROSTAR-1-MS LED solar powered light makes outdoor amenity lighting installation easy.

Tough IP65 Aluminium body and delivering 100lm/w. Set to run at stand by mode of 25% output and then 100% output on movement detection then drop back down to 25% after 2 minutes of no detection.

Designed for the Northern Hemisphere it can easily operate throughout the winter nighttime hours.

With surface or clamp bracket mounting options making this range truly versatile for all kinds of signage installations.

Unique 90° optical lens that offers an anti-glare design for pedestrian and car safety.

## TECHNICAL + OPTIONS

Model Code	Output	Lumen Output	Colour Temp	Hours of full output 100%	Charging Time	Install Height	Dimensions (cm)
Astrid SSL-PROSTAR-1-MS-25/100	5W	500lm	3000K 4000K 6000K	10-12hrs	3-4hrs	3-5mtr	L33 H7 W11